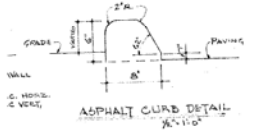
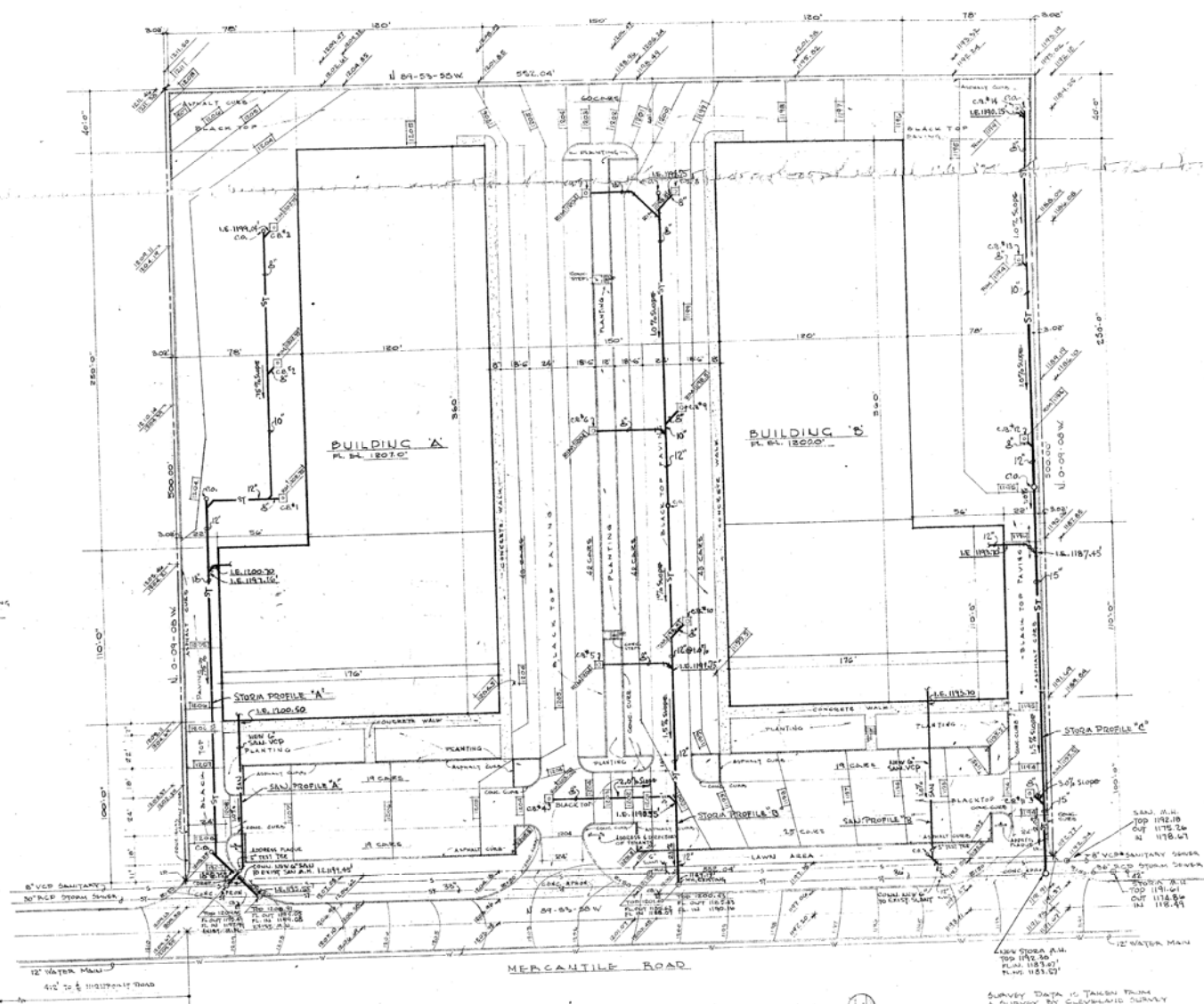


318
360
362
388
707.77
621.11
121.22

60 90 FT
840 90 FT
840 90 FT
720 90 FT



DETAIL
1/4" = 1'-0"



SITE PLAN

GENERAL NOTES

- SEE PLANS P. 1 & 2-3 FOR STORM & SAN. W. BLDGS. 'A' & 'B'
- SEE PLAN P. 4 FOR STORM (SAND) PROFILES AND DETAILS
- STORM SANITARY COVERS SHALL BE VOP 15-20" W/STANDARD JOISTS
- STORM SANITARY SHALL BE VOP 15-20" W/STANDARD JOISTS AND JOIST BRACING SHALL BE VOP 15-20" W/STANDARD JOISTS
- ALL SANITARY CONSTRUCTION SHALL CONFORM TO SPECIFICATIONS & STANDARD CONSTRUCTION DETAILS OF THE CUYAHOGA COUNTY SANITARY AUTHORITY.
- STORM DRAINAGE DESIGN BASED ON 3" RAINFALL (OUTLET'S R-100'S) 3 CFS / ACRES ALL THINGS & INTERLUDES SURFACE AREA.
- OWNER SHALL SHOW AS "DANGER" ON COUNTY MAP
- ALL SANITARY SHALL HAVE A MINIMUM COVER OF 3" TO BEING SUBGRADE. IF LOTS, BACKFILL TO 6" OR 8" CONCRETE - 6" AND ALL AROUND.

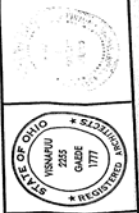
LEGEND

- (S) — SANITARY SEWER
- (S) — STORM SEWER
- (S) — MAIN
- (S) — GUTTER
- (S) — GUTTER
- (S) — GUTTER
- (S) — GUTTER
- (S) — GUTTER

SURVEY DATA IS TAKEN FROM A SURVEY BY CLEVELAND SURVEY DATED 11/15/70.

KEY:
NEW FLOW
EXIST FLOW

WAREHOUSE - DISTRIBUTION - BUILDINGS
MERCANTILE ACCOUNTS
MERCANTILE FOOD COMMERCIAL
MERCANTILE



VISNAPU & GAEDE
ARCHITECTS AND PLANNERS
1700 KEITH BLDG.
CLEVELAND, OHIO 44115
TEL. 316-841-4287

DATE	DESCRIPTION
11-27-70	REVISED
12-10-70	REVISED
12-10-70	REVISED
12-10-70	REVISED

DRAWN BY ERC
DATE 25 NOV 1970
JOB NO. 694

SHEET NUMBER
P-1
OF 4